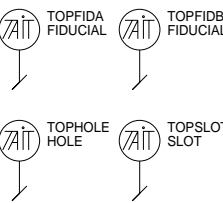
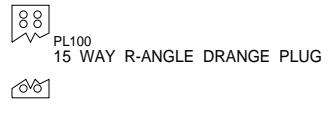


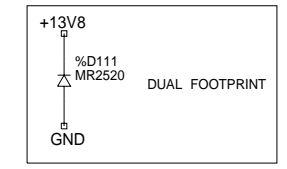
DGND & GND ARE JOINED THROUGH R617 ON SHEET 6



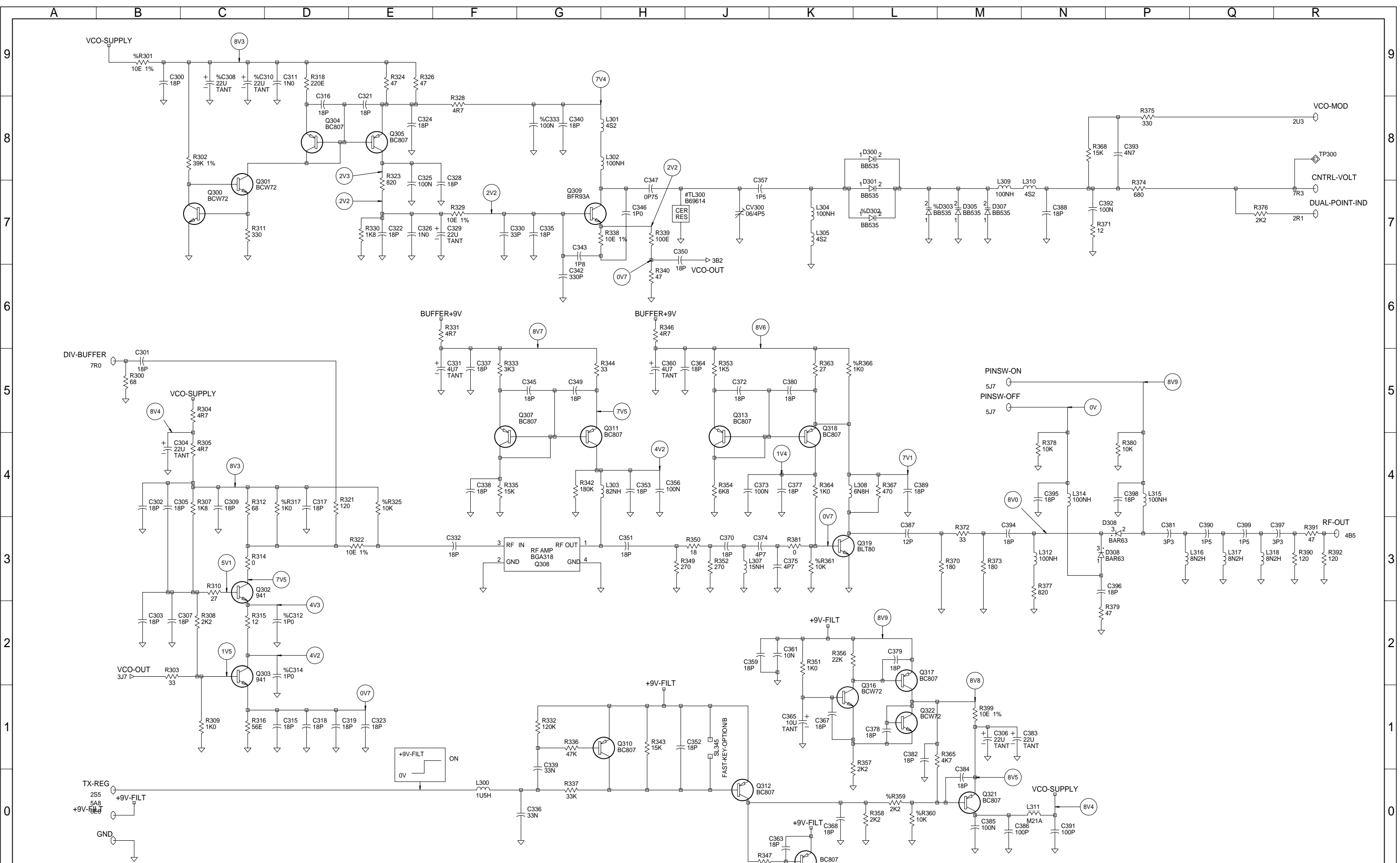
02D	CREATED MANUAL INFO					
02C	MINOR MODS AFTER DESIGN REVIEW	MAJ				
02B	VALUE CHANGES ONLY	MAJ				
02A	ADDED ADDITIONAL PA FILTERING	MAJ				05-11-99
01A	VCO ON MAIN PCB	RBM				19/08/99
00A	ORIGINAL	BEN C				26/11/98
REV/ISS	AMENDMENTS	DRAWN	CHKD	D.O.	APVD	DATE



PRODUCT INDICATORS					
-10	-20	-30	-15	-25	-35



© TAIT ELECTRONICS			
T881TX			
IPN:	ISSUE:	ID:	
220-01575-02	D	2.S.C. 1	
PROJECT:	DESIGNER:	FILE NAME:	FILE DATE:
T881	MAJ	1575_02d	11-Dec-00
			NO.SHEETS: 9



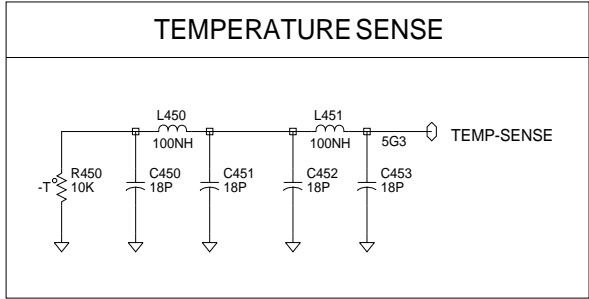
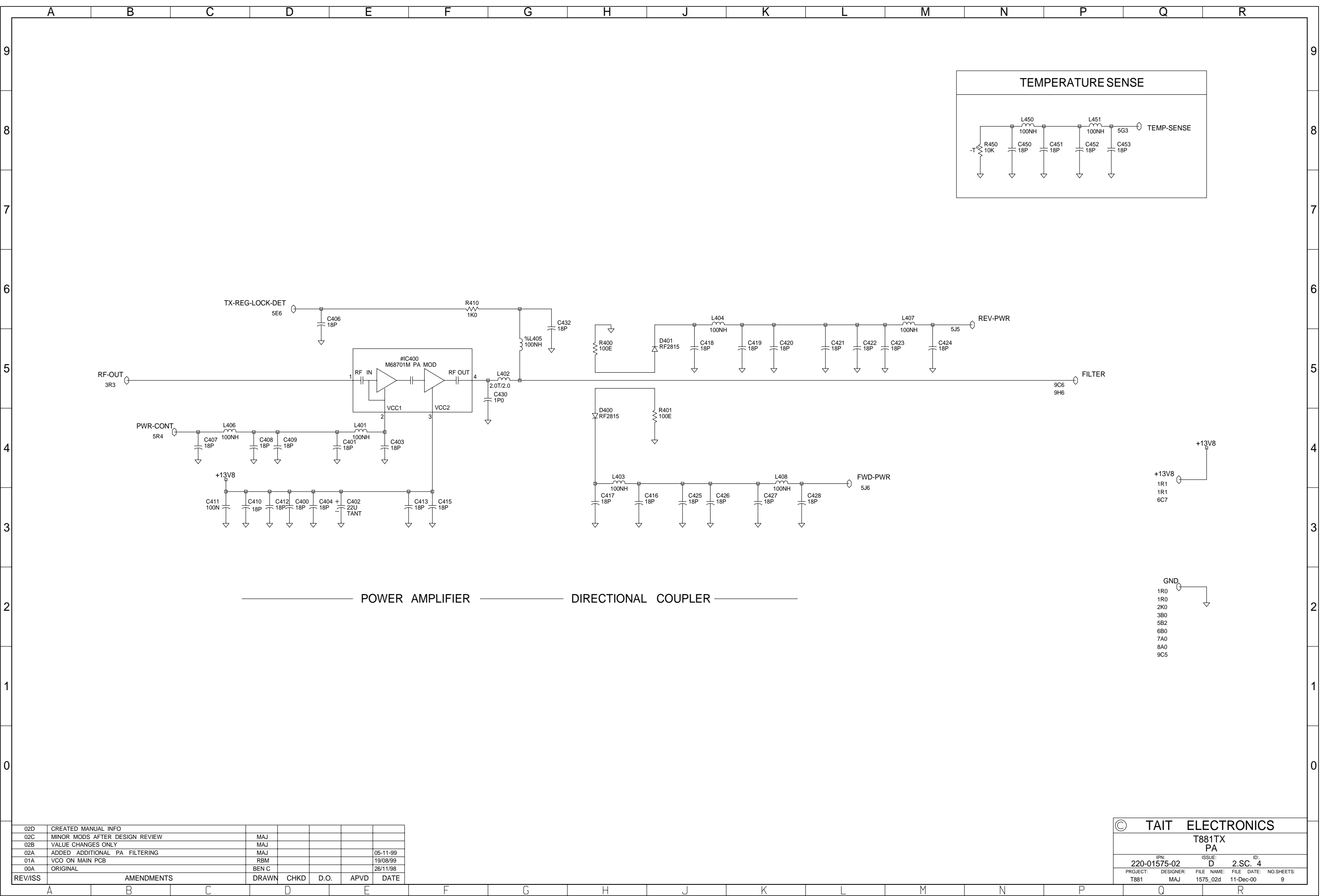
02D	CREATED MANUAL INFO					
02C	MINOR MODS AFTER DESIGN REVIEW	MAJ				
02B	VALUE CHANGES ONLY	MAJ				
02A	ADDED ADDITIONAL PA FILTERING	MAJ			05-11-99	
01A	VCO ON MAIN PCB	RBM			19/08/99	
00A	ORIGINAL	BEN C			26/11/98	
REV/ISS	AMENDMENTS	DRAWN	CHKD	D.O.	APVD	DATE

© TAIT ELECTRONICS

T881TX
VCO

IPN: 220-01575-02 ISSUE: D ID: 2.S.C. 3

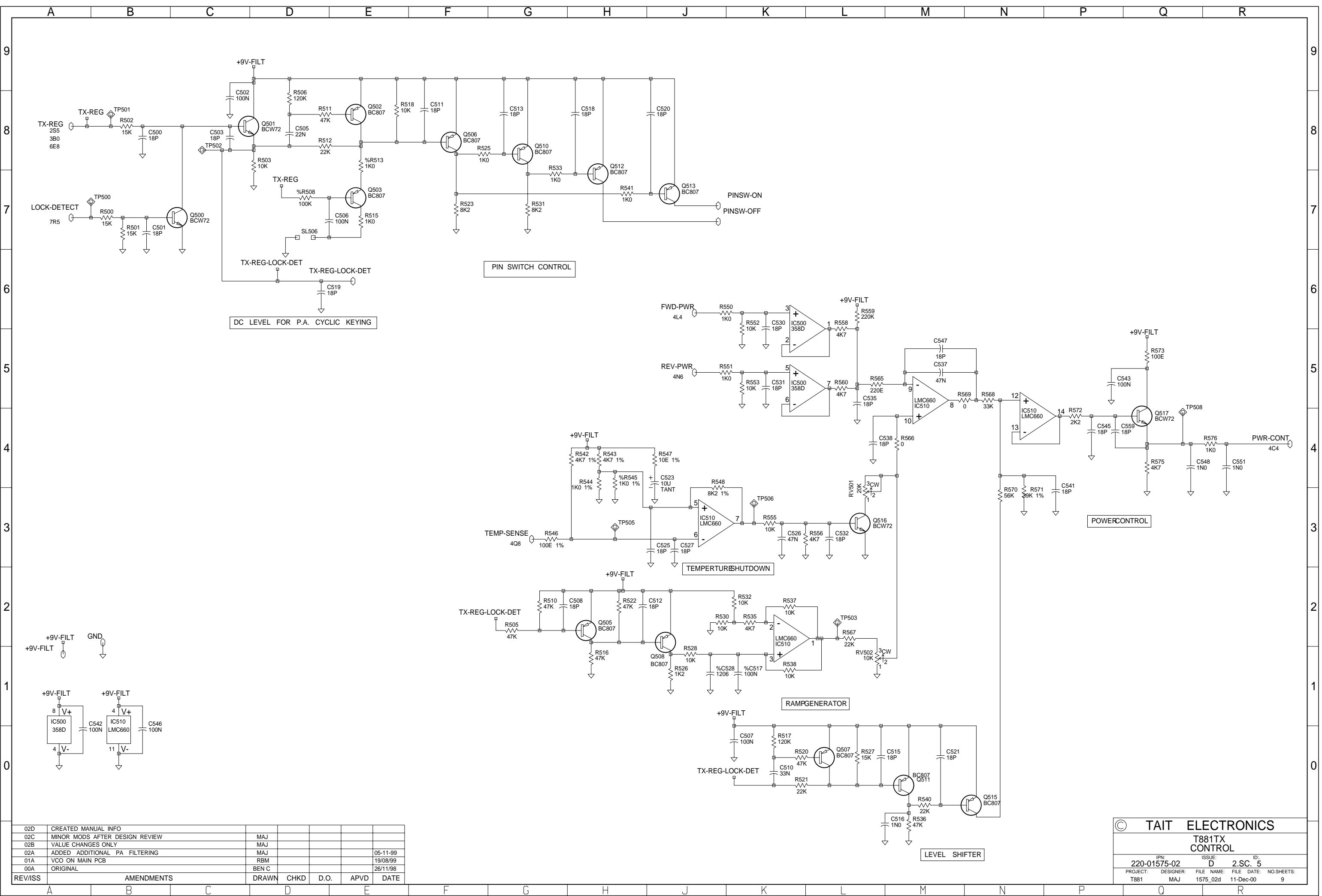
PROJECT: T881 DESIGNER: MAJ FILE NAME: 1575_02d FILE DATE: 11-Dec-00 NO.SHEETS: 9



————— POWER AMPLIFIER ————— DIRECTIONAL COUPLER —————

02D	CREATED MANUAL INFO					
02C	MINOR MODS AFTER DESIGN REVIEW	MAJ				
02B	VALUE CHANGES ONLY	MAJ				
02A	ADDED ADDITIONAL PA FILTERING	MAJ			05-11-99	
01A	VCO ON MAIN PCB	RBM			19/08/99	
00A	ORIGINAL	BEN C			26/11/98	
REV/ISS	AMENDMENTS	DRAWN	CHKD	D.O.	APVD	DATE

© TAIT ELECTRONICS			
T881TX PA			
IPN:	ISSUE:	ID:	
220-01575-02	D	2.S.C. 4	
PROJECT:	DESIGNER:	FILE NAME:	FILE DATE:
T881	MAJ	1575_02d	11-Dec-00
			NO.SHEETS: 9



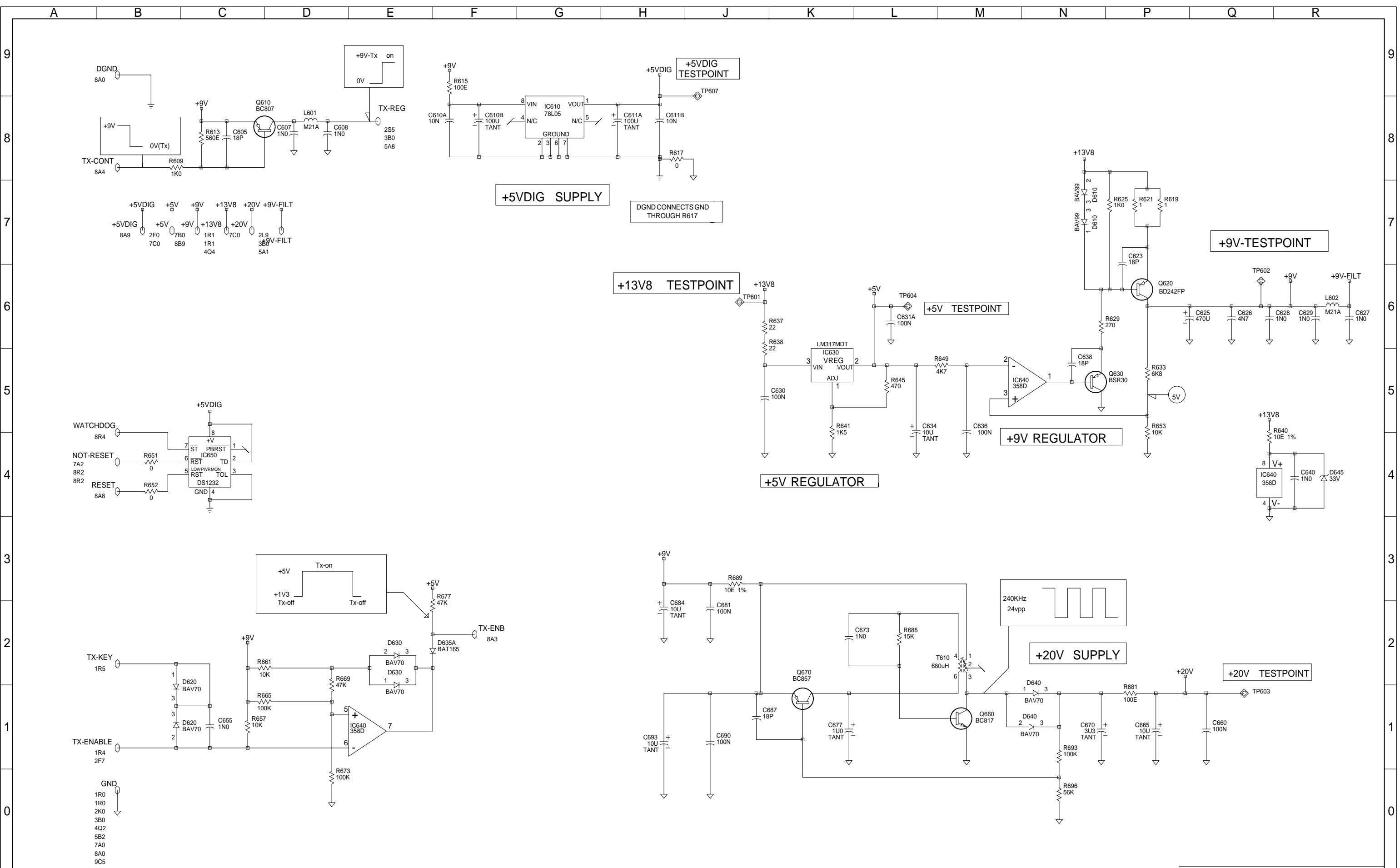
02D	CREATED MANUAL INFO					
02C	MINOR MODS AFTER DESIGN REVIEW	MAJ				
02B	VALUE CHANGES ONLY	MAJ				
02A	ADDED ADDITIONAL PA FILTERING	MAJ			05-11-99	
01A	VCO ON MAIN PCB	RBM			19/08/99	
00A	ORIGINAL	BEN C			26/11/98	
REV/ISS	AMENDMENTS	DRAWN	CHKD	D.O.	APVD	DATE

© TAIT ELECTRONICS

T881TX CONTROL

IPN: 220-01575-02 ISSUE: D ID: 2.S.C. 5

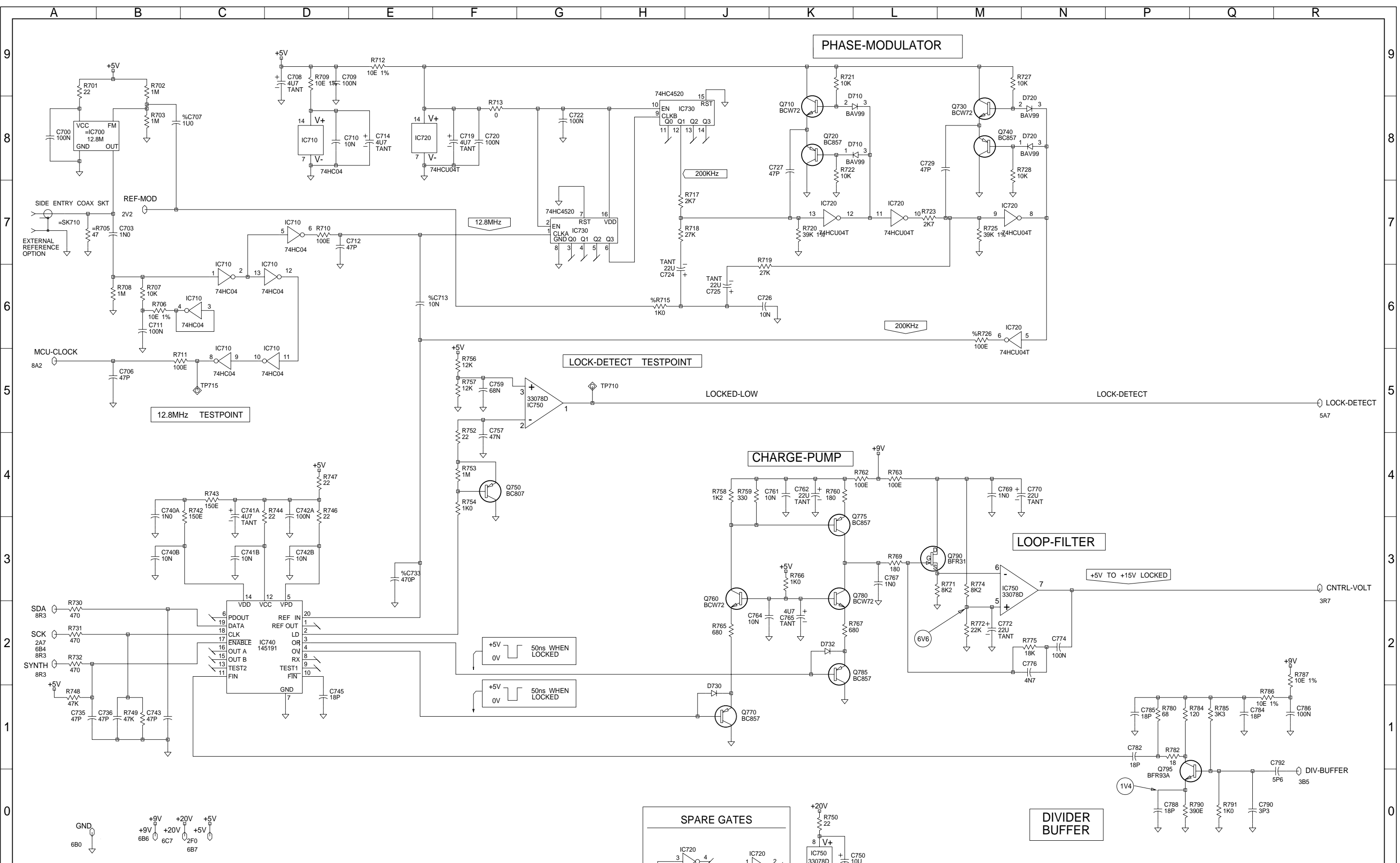
PROJECT: T881 DESIGNER: MAJ FILE NAME: 1575_02d FILE DATE: 11-Dec-00 NO.SHEETS: 9



Q2D	CREATED MANUAL INFO	MAJ				
Q2C	MINOR MODS AFTER DESIGN REVIEW	MAJ				
Q2B	VALUE CHANGES ONLY	MAJ				
REV/ISS	AMENDMENTS	DRAWN	CHKD	D.O.	APVD	DATE

© TAIT ELECTRONICS
T881TX

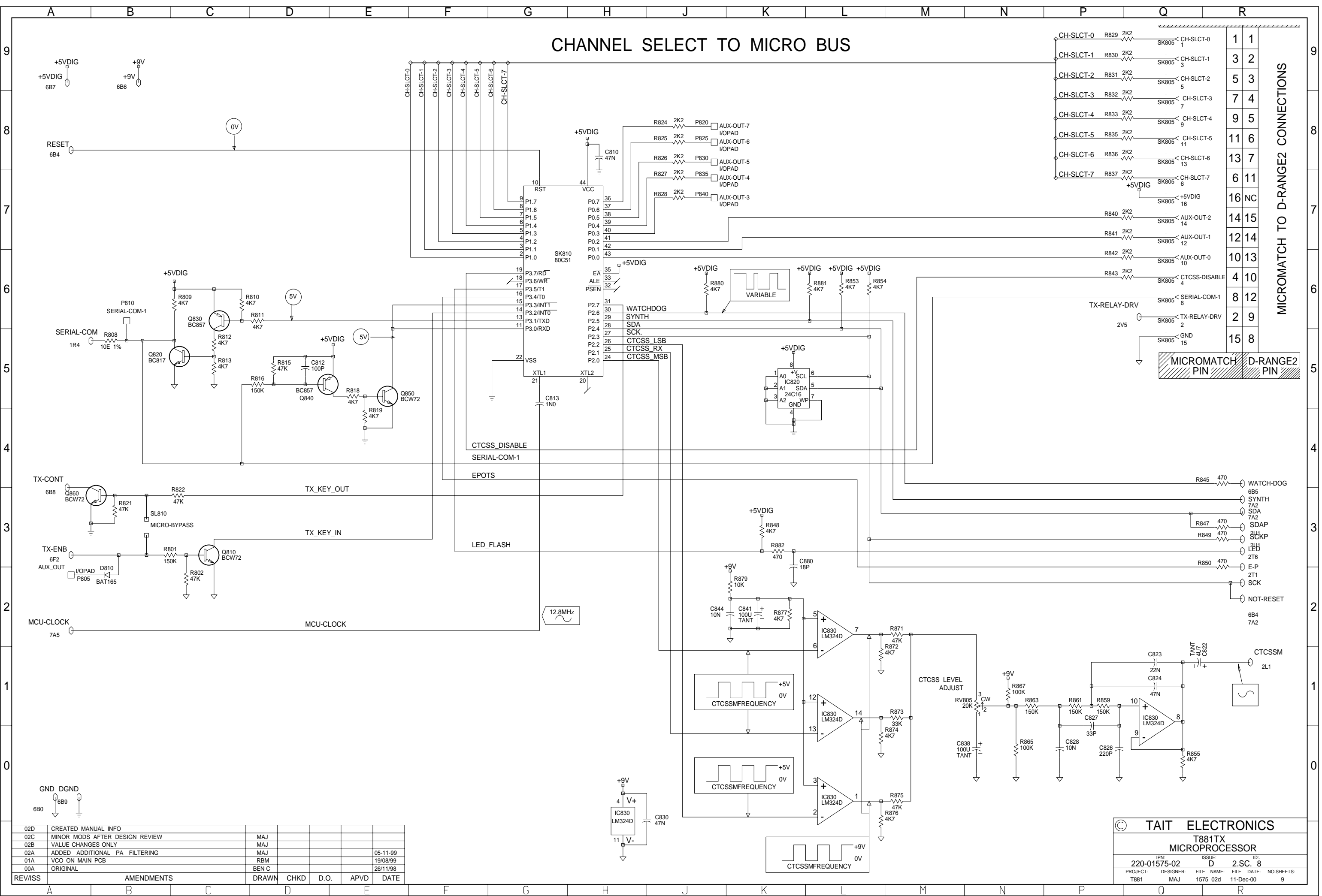
IPN:	ISSUE:	ID:
220-01575-02	D	2.SC. 6
PROJECT:	DESIGNER:	FILE NAME:
T881	MAJ	1575_02d
		FILE DATE:
		11-Dec-00
		NO.SHEETS:
		9



02D	CREATED MANUAL INFO					
02C	MINOR MODS AFTER DESIGN REVIEW	MAJ				
02B	VALUE CHANGES ONLY	MAJ				
02A	ADDED ADDITIONAL PA FILTERING	MAJ			05-11-99	
01A	VCO ON MAIN PCB	RBM			19/08/99	
00A	ORIGINAL	BEN C			26/11/98	
REV/ISS	AMENDMENTS	DRAWN	CHKD	D.O.	APVD	DATE

© TAIT ELECTRONICS			
T881TX SYNTHESISER			
IPN: 220-01575-02	ISSUE: D	ID: 2.S.C. 7	
PROJECT: T881	DESIGNER: MAJ	FILE NAME: 1575_02d	FILE DATE: 11-Dec-00
			NO.SHEETS: 9

CHANNEL SELECT TO MICRO BUS



MICROMATCH TO D-RANGE2 CONNECTIONS

MICROMATCH PIN	D-RANGE2 PIN
1	1
3	2
5	3
7	4
9	5
11	6
13	7
6	11
16	NC
14	15
12	14
10	13
4	10
8	12
2	9
15	8

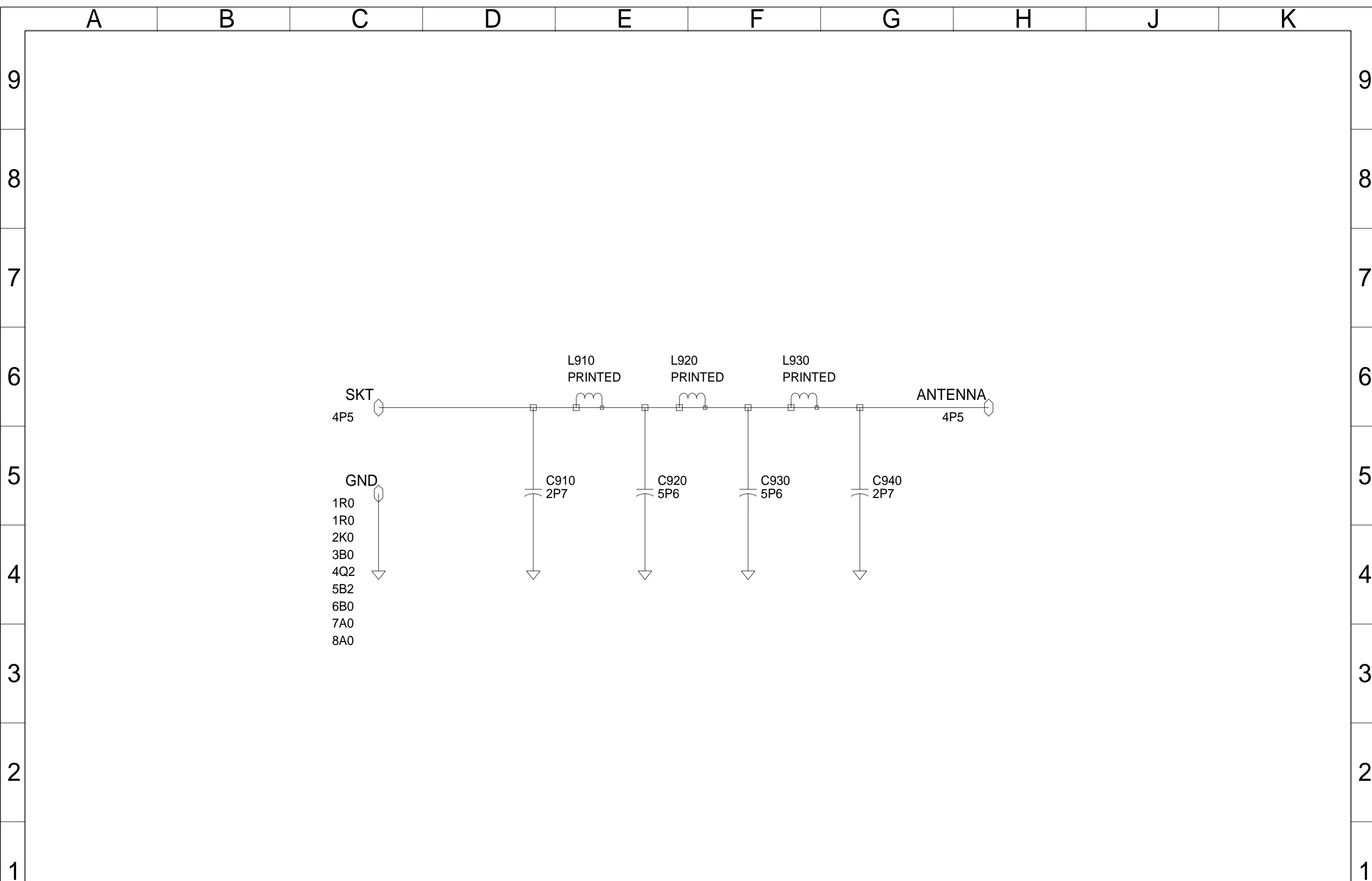
REV/ISS	AMENDMENTS	DRAWN	CHKD	D.O.	APVD	DATE
02D	CREATED MANUAL INFO					
02C	MINOR MODS AFTER DESIGN REVIEW	MAJ				
02B	VALUE CHANGES ONLY	MAJ				
02A	ADDED ADDITIONAL PA FILTERING	MAJ				05-11-99
01A	VCO ON MAIN PCB	RBM				19/08/99
00A	ORIGINAL	BEN C				26/11/98

© TAIT ELECTRONICS

T881TX MICROPROCESSOR

IPN: 220-01575-02 ISSUE: D ID: 2.S.C. 8

PROJECT: T881 DESIGNER: MAJ FILE NAME: 1575_02d DATE: 11-Dec-00 NO.SHEETS: 9



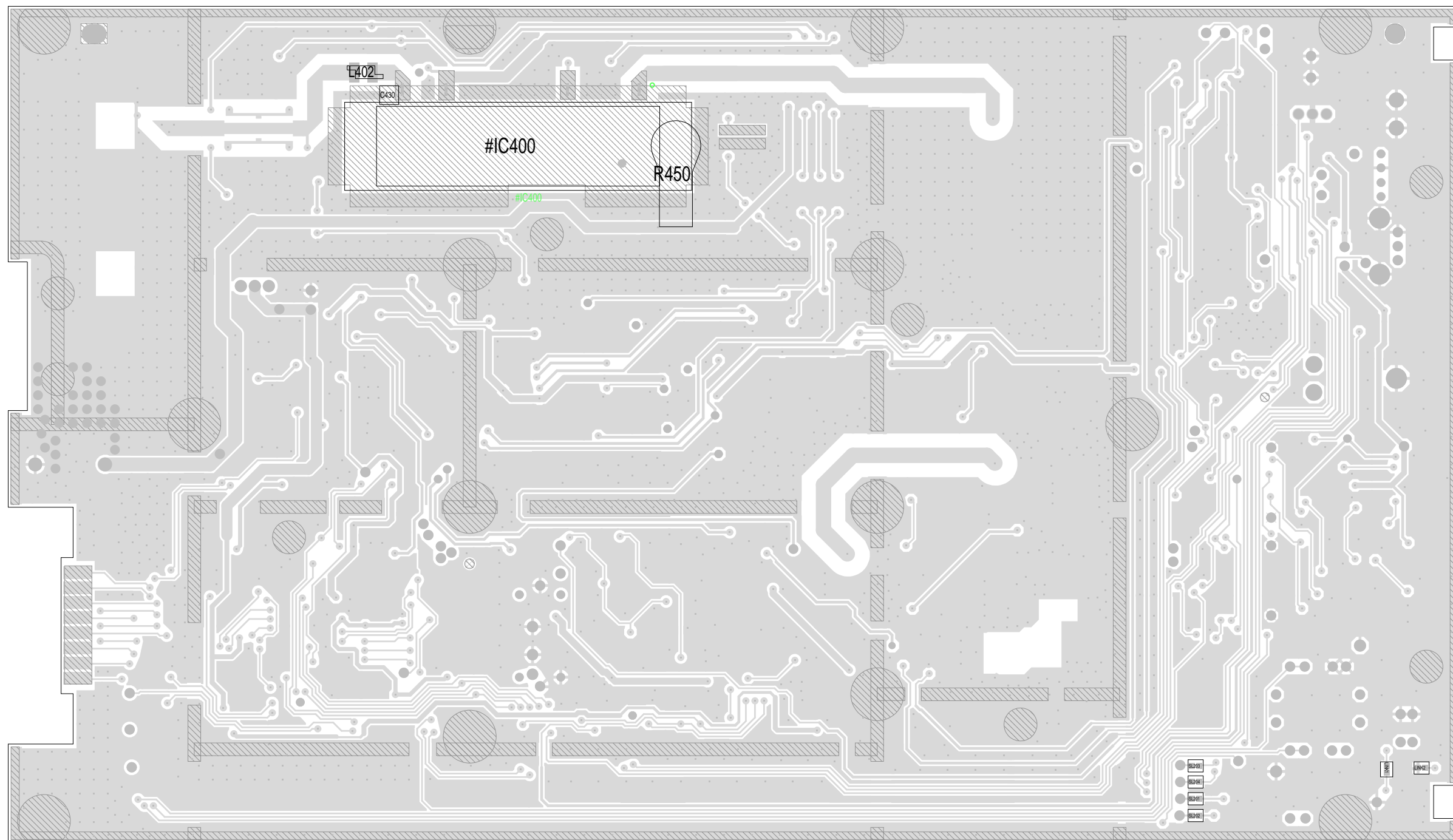
02D	CREATED MANUAL INFO					
02C	MINOR MODS AFTER DESIGN REVIEW	MAJ				
02B	VALUE CHANGES ONLY	MAJ				
02A	ADDED ADDITIONAL PA FILTERING	MAJ				05-11-99
01A	VCO ON MAIN PCB	RBM				19/08/99
00A	ORIGINAL	BEN C				26/11/98
REV/ISS	AMENDMENTS	DRAWN	CHKD	D.O.	APVD	DATE

© TAIT ELECTRONICS

T881TX
HARMONIC FILTER

IPN: 220-01575-02 ISSUE: D ID: 2.SC. 9

PROJECT: T881 DESIGNER: MAJ FILE NAME: 1575_02d FILE DATE: 11-Dec-00 NO.SHEETS: 9



Q P N M L K J H G F E D C B A

TAIT ELECTRONICS	IPN: 220-01575-02	ISS: -02	ID: 2.BA	DATE: 22 Dec 2000
T881TX PCB LAYOUT - BOTTOM SIDE				

Scale: 1.2:1 ; Rotation: 0 degrees